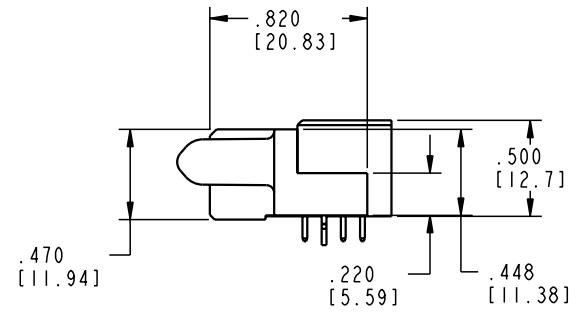
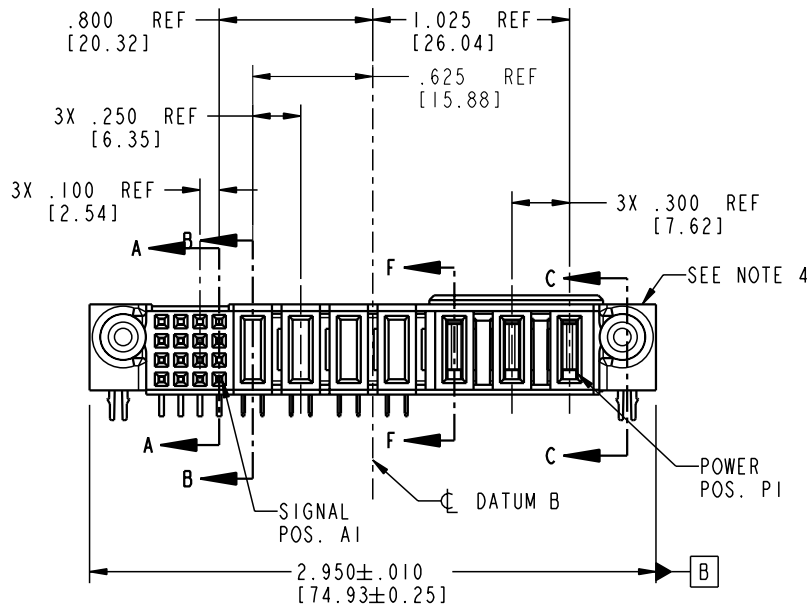
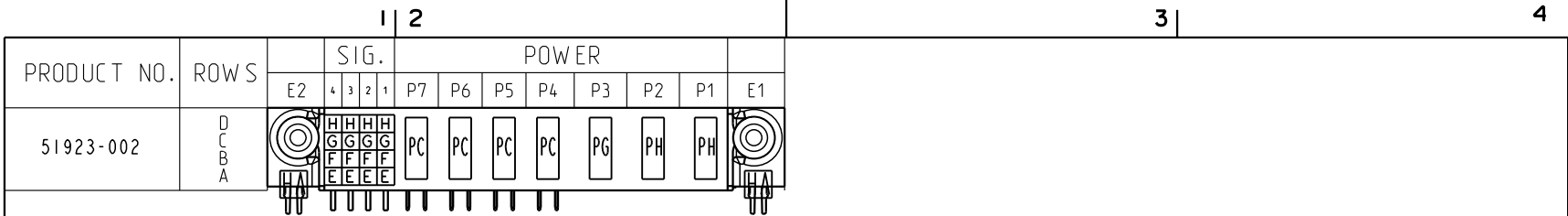


Tous droits strictement réservés. Reproduction ou communication o des liers interdite sous quelque forme que ce soit sans autorisation écrite du propriétaire. Propriete de c FCI. Droits de reproduction FCI.

All rights strictly reserved. Reproduction or issue to third parties in any form whenever is not permitted without written authority from the proprietor. Property of FCI. Copyright FCI.



CODE	DIM "M" MATING LENGTH	CONTACT TYPE	CONTACT WIPE LENGTH
E	N/A [N/A]	SIGNAL	SEE NOTE 12
F	N/A [N/A]	SIGNAL	SEE NOTE 12
G	N/A [N/A]	SIGNAL	SEE NOTE 12
H	N/A [N/A]	SIGNAL	SEE NOTE 12
PG	.042 [1.07]	POWER	.227 [5.77]
PH	.092 [2.34]	POWER	.177 [4.50]
HA	N/A [N/A]	HOLD-DOWN	N/A
PC	.092 [2.34]	POWER	.177 [4.50]

mat'l code SEE NOTE 2				tolerances unless otherwise specified		CUSTOMER	 www.fciconnect.com	
ltr	ecn no.	dr	date	linear	projection	COPY		
A	V03-0173	TAB	02/13/03	.XX±.01/0.X±0.3	 INCH/MM	title 3ACP + 4P + 16S R/A SOLDER RECEPTACLE		
B	V03-0213	MEM	02/21/03	.XXX±.005/0.XXX±0.13			product family	code
C	V03-0245	TAB	03/10/03	.XXXX±.0020/0.XXX±0.051	scale	PwrBlade	213	
				dr	T. BRUNGARD	02/13/03	size	dwg no
				enr	M. MOSTOLLER	02/13/03	A	51923-002
				chr	M. MOSTOLLER	02/13/03	sheet	
				appd	M. MOSTOLLER	02/13/03	1 of 5	
sheet index	revision sheet	C	C	C	C	C	cage code	
		1	2	3	4	5	22526	

Pro/E

cage code 22526

PDM: Rev:C

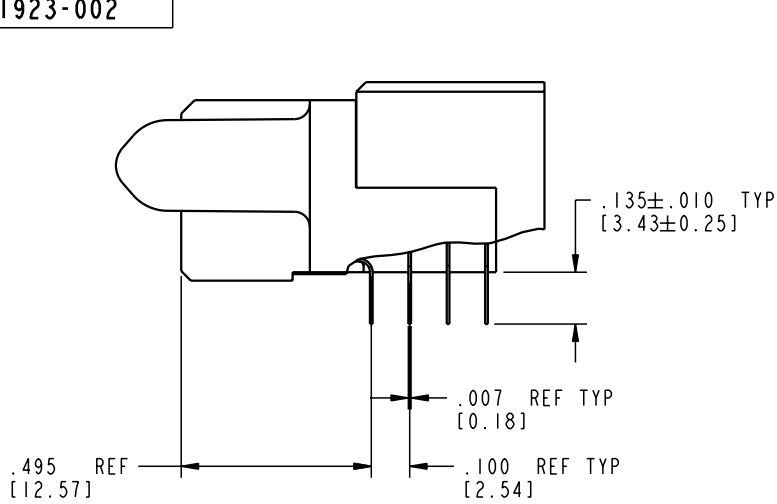
STATUS: Released

Printed: Aug 15, 2007

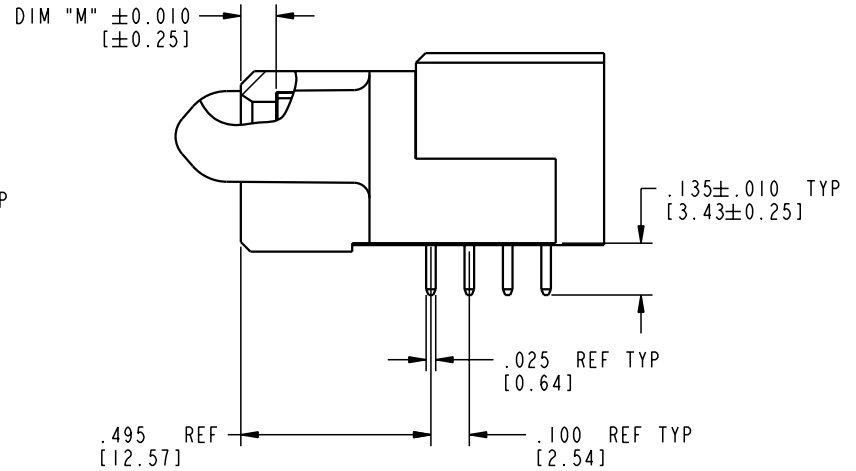
Tous droits strictement réservés. Reproduction ou communication o des tiers interdite sous quelque forme que ce soit sans autorisation écrite du propriétaire. Propriété de c FCI. Droits de reproduction FCI.

All rights strictly reserved. Reproduction or issue to third parties in any form whatever is not permitted without written authority from the proprietor. Property of FCI. Copyright FCI.

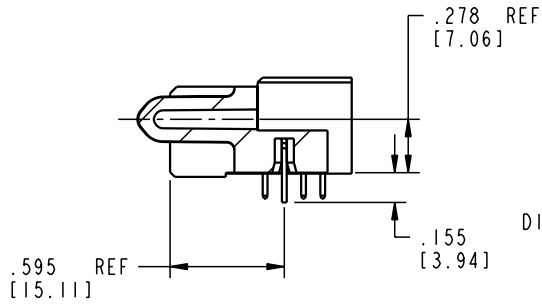
PRODUCT NUMBER
51923-002



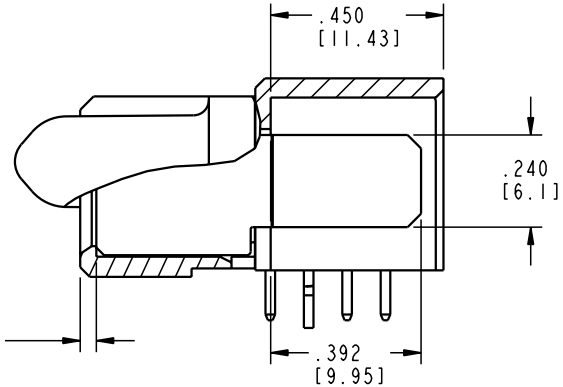
BROKEN-OUT SECTION A-A
SCALE 2:1




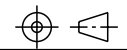
BROKEN-OUT SECTION B-B
SCALE 2:1



SECTION C-C



SECTION F-F
SCALE 2:1

mat'l code SEE NOTE 2				tolerances unless otherwise specified		CUSTOMER		 www.fciconnect.com	
ltr	ecn no.	dr	date	linear	.XX±.01/0.X±0.3	COPY		title	
C				projection	.XXX±.005/0.XX±0.13			3ACP + 4P + 16S R/A SOLDER RECEPTACLE	
				angles	.XXX±.0020/0.XXX±0.051	INCH/MM		product family	
				dr	T. BRUNGARD 02/13/03	scale		PwrBlade	
				enr	M. MOSTOLLER 02/13/03	1:1		code	
				chr	M. MOSTOLLER 02/13/03			213	
				appd	M. MOSTOLLER 02/13/03			sheet	
sheet index		revision sheet						2 of 5	

cage code 22526

Pro/E

PDM: Rev:C

STATUS: Released

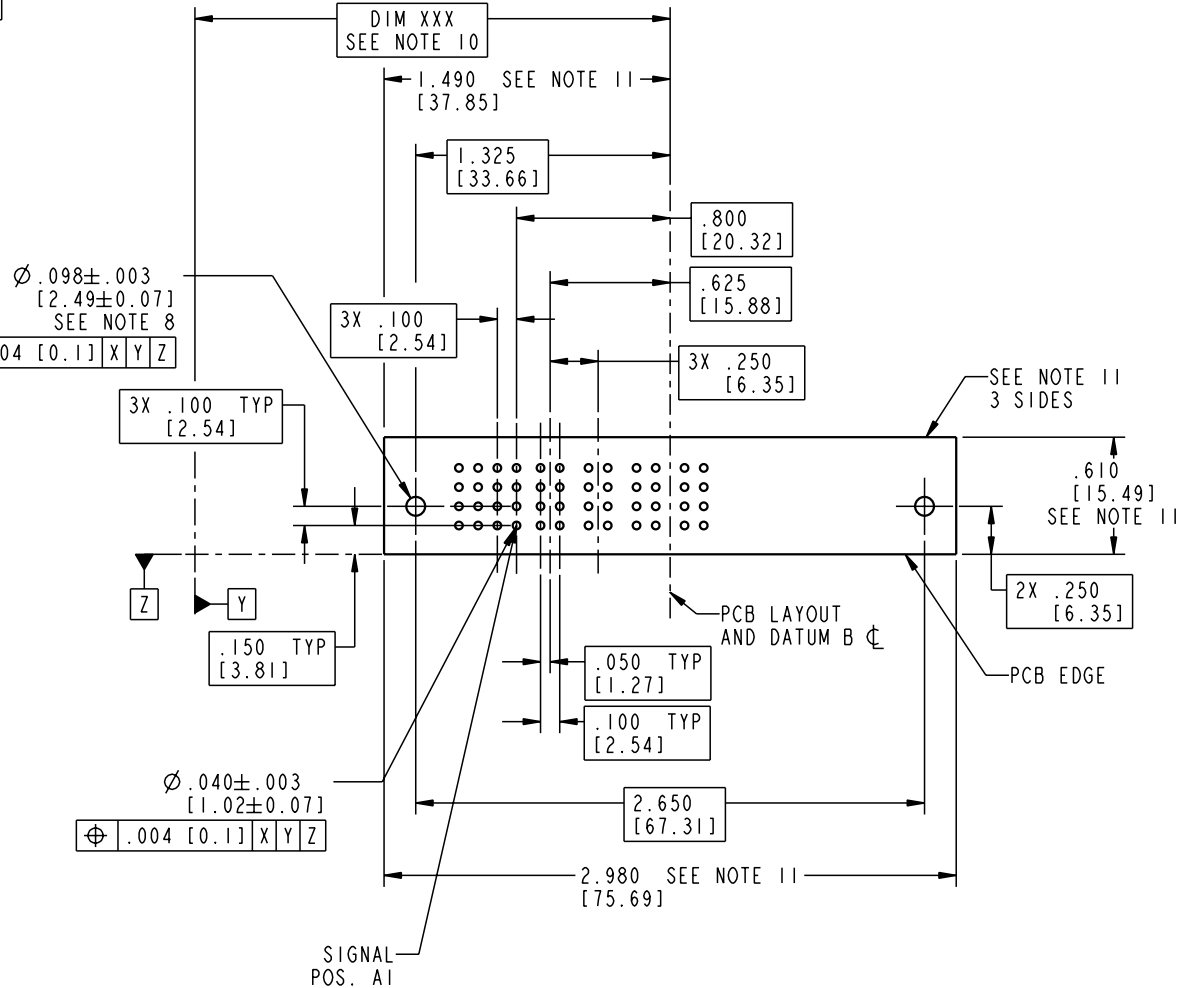
Printed: Aug 15, 2007

Tous droits strictement reserves. Reproduction ou communication a des tiers interdite sous quelque forme que ce soit sans autorisation écrite du propriétaire. Propriete de c FCI. Droits de reproduction FCI.



All rights strictly reserved. Reproduction or issue to third parties in any form whatever is not permitted without written authority from the proprietor. Property of FCI. Copyright FCI.

PRODUCT NUMBER
51923-002



material code			tolerances unless otherwise specified			CUSTOMER			
SEE NOTE 2			.XX±.01/0.X±0.3			COPY		www.fciconnect.com	
ltr	ecm no.	dr	date	linear	.XXX±.005/0.XX±0.13	projection	title	3ACP + 4P + 16S	
C				angles	.XXX±.0020/0.XX±0.051		R/A SOLDER RECEPTACLE		
				dr	T. BRUNGARD 02/13/03	INCH/MM	product family	PwrBlade	code
				enrg	M. MOSTOLLER 02/13/03		size	dwg no	213
				chr	M. MOSTOLLER 02/13/03	scale	A	51923-002	sheet
				appd	M. MOSTOLLER 02/13/03	1:1			3 of 5
sheet index	revision sheet								

cage code 22526

Tous droits strictement réservés. Reproduction ou communication o des tiers interdite sous quelque forme que ce soit sans autorisation écrite du propriétaire. Propriete de c FCI. Droits de reproduction FCI.

A
FCI

All rights strictly reserved. Reproduction or issue to third parties in any form, whatever is not permitted without written authority from the proprietor. Property of FCI. Copyright FCI.

B

PRODUCT NUMBER

51923-002

NOTES:

1. DIMENSIONS AND TOLERANCES ARE IN ACCORDANCE WITH ASME Y14.5M, 1994 UNLESS OTHERWISE SPECIFIED.

CONNECTOR NOTES:

- 2. HOUSING MATERIAL: UL 94 V-0 GLASS FILLED
HIGH-TEMP THERMOPLASTIC
POWER CONTACT MATERIAL: COPPER ALLOY
SIGNAL PIN MATERIAL: COPPER ALLOY
- 3. PLATING:
SIGNAL PINS: 30μ"/0.76μm Au OVER 50μ"/1.27μm Ni
POWER CONTACTS: 50μ"/1.27μm Ni UNDER ALL
WITH 30μ"/0.76μm Au ON CONTACT AREA
AND 100μ"/2.54μm 93/7 SnPb ON PCB INTERFACE
AND CABLE CONTACT.


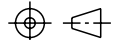
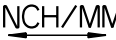
4. MANUFACTURER'S NAME, P/N, AND DATE CODE TO APPEAR ON THIS SURFACE.

5. PRODUCT SPECIFICATION GS-12-149.
APPLICATION SPECIFICATION BUS-20-067.

6. PACKAGED IN TRAYS.

PCB NOTES:

- 7. ALL HOLE DIAMETERS ARE FINISHED HOLE SIZE.
- 8. MOUNTING HOLES, WHERE APPLICABLE, ARE UNPLATED.
- 9. Ø.0453±.0010 [1.151±0.025] DRILLED HOLES PLATED WITH .0003 [0.008] MIN SnPb OVER .001 [0.03] TO .003 [0.08] Cu PLATING TO ACHIEVE Ø.040±.003 [1.02±.07] HOLE.
- 10. "DIM XXX" TO BE DETERMINED BY THE CUSTOMER.
- 11. CONNECTOR KEEP-OUT ZONE.
- 12. FOR SIGNAL CONTACT WIPE LENGTHS REFER TO MATING HEADER DRAWING.

mat'l code		SEE NOTE 2		tolerances unless otherwise specified		CUSTOMER		 FCI www.fciconnect.com	
ltr	ecn no.	dr	date	linear	.XX±.01/0.X±0.3	COPY			
C				projection	.XXX±.005/0.XX±0.13			title	
				angles	.XXX±.0020/0.XXX±0.051			3ACP + 4P + 16S R/A SOLDER RECEPTACLE	
				dr	T. BRUNGARD 02/13/03	INCH/MM		product family	
				enr	M. MOSTOLLER 02/13/03	scale		PwrBlade	
				chr	M. MOSTOLLER 02/13/03	1:1		code	
				appd	M. MOSTOLLER 02/13/03			213	
sheet index		revision sheet						size	
								A 51923-002	
								sheet 4 of 5	

A

B

1 | 2

3 |

4

1 | 2

Pro/E

3 |

cage code 22526

4

PDM: Rev:C

STATUS: **Released**

Printed: Aug 15, 2007

Tous droits strictement reserves. Reproduction ou communication a des tiers interdite sous quelque forme que ce soit sans autorisation écrite du propriétaire. Propriete de c FCI. Droits de reproduction FCI.

A
FCI

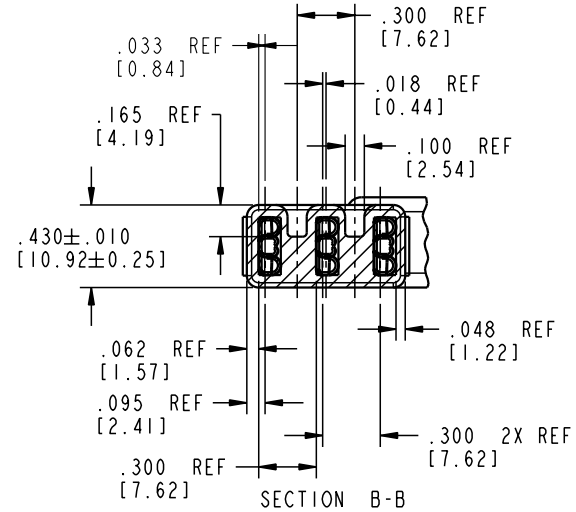
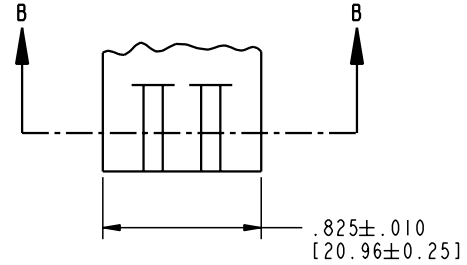
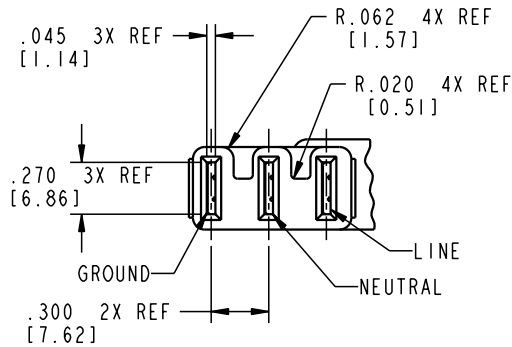
All rights strictly reserved. Reproduction or issue to third parties in any form whatever is not permitted without written authority from the proprietor. Property of FCI. Copyright FCI.


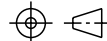

A

FCI

B

PRODUCT NUMBER
51923-002



mat'l code				SEE NOTE 2		tolerances unless otherwise specified		CUSTOMER		 FCI www.fciconnect.com	
ltr	ecn no.	dr	date	linear	.XX±.01/0.X±0.3		COPY		 title 3ACP + 4P + 16S R/A SOLDER RECEPTACLE		
C					.XXX±.005/0.XX±0.13		projection				
					angles	.XXXX±.0005/0.XXX±0.013		 INCH/MM scale 1:1		PwrBlade	
				dr		T. BRUNGARD	02/13/03			size	dwg no
				enr	M. MOSTOLLER	02/13/03			A	51923-002	5 of 5
				chr	M. MOSTOLLER	02/13/03					
				appd	M. MOSTOLLER	02/13/03					
sheet index	revision sheet										

A

FCI

B

1 | 2

3 |

4

1 | 2

Pro/E

3 |

cage code 22526

4

PDM: Rev:C

STATUS: **Released**

Printed: Aug 15, 2007